

M.M.Co.-DR.MILES MEDICAL CO.-CONTINUED

TYPE-XII



FONT BABB-1" NO SERIF-
"B" WIDE - BALANCE NARROW
"PUNCTUATION"



FONT BBBB-1" NO SERIF-
"B" & "9" NARROW -
"PUNCTUATION"



FONT BBBB-1" NO SERIF-
"B" & FIRST "9" NARROW - LAST
"9" WIDE
"NO PUNCTUATION"



FONT CABA-1" HAS SQUARE
TOP - FIRST "B" LAST "9" NARROW
- FIRST "9" WIDE
"NO PUNCTUATION"

TYPE-XIII



ALL SERIF FONTS



SECOND "M" FALLING
NO PUNCTUATION



INVERTED OVERPRINT



NARROW & LONG "9"



WIDER & SHORT "9"

TYPE-XIV



PLAIN FONTS



VARIOUS DOUBLE CANCELLATIONS

M.M.Co. ~ DR. MILES MEDICAL CO. CONTINUED



TYPE-XIII-



TYPE-XIV-

DOUBLE OVERPRINT
UNCOMMON -

M.J.B.CO. NEW YORK, N.Y.



TYPE-I-



TYPE-II-

TYPE-III-

M.N.F.CO. ~ MOXIE NERVE FOOD CO. VARIOUS CITIES



PURPLE



RED



~ DIFFERENT "BOTTLE" CANCELS ~

N.B.&Co. ~ NELSON BAKER CO.

DETROIT, MICH.

~ COMPANY WITH 2ND MOST OVERPRINT TYPES KNOWN ~ "12"

TYPE-I-



- SHADES -

TYPE-II & IIA



TYPE-III-



TYPE-VI-



TYPE-VII-



TYPE-VIII-



TYPE-X-



TYPE-XI



TYPE-XII



PROVISIONAL

NR (INA SQUARE) ~ NATURE'S REMEDY CO. PHILADELPHIA, PA.



SCARCE OVERPRINT

O. C. Co. ~ OD CHEMICAL Co. N.Y., N.Y.



TYPE - I -



TYPE - II -



TYPE - III -

C. H. & F. L. OSGOOD NORWICH, CONN.



SINGLE LINE CIRCULAR CANCELS
(BLACK ONLY)

O. C. & SON BOSTON, MASS.



PURPLE -

SINGLE LINE CIRCULAR CANCELS



BLACK -

O. J. H. CHICAGO, ILL.



"3" IN DATE "INVERTED"

P.M.CO. ~ PARTOLA MFG. CO.

N.Y., N.Y.



TYPE-I-



1898



TYPE-II-
1899



1900



MULTI OVERPRINT
TYPE-III-

PUSHER LABS.

CITY UNKNOWN



UNUSUAL HANDSTAMP - "SKULL & CROSSBONES"



- UNLISTED DENOMINATION -



TYPE-I-

UNLISTED DENOMINATION



UNLISTED IN "RED"



YEAR DATE ONLY



UNLISTED IN "PURPLE"



UNLISTED IN "RED"



TYPE-II-



"GREEN" SCARCE COLOR



TYPE-III-

AK (OR) AKCO. ~ THE ANTIKAMNIA CHEMICAL CO.* ~

ST. LOUIS, MO.

TYPE - I -



TYPE - V -



OCT. 1988



8 & 9 OF YEAR DATE
TRANSPosed - ONLY
ONE RECORDED"



2nd "O" IN 1900 SMALL

TYPE - VI -



POORLY PRINTED OVERPRINT



* DENOTES COMPANIES THAT HAD OVER 100 DIFFERENT PRINTED PRECANCELS.

ASCHENBACH & MILLER

PHILADELPHIA, PA.



PROVISIONAL-July 17, 1898



UNLISTED DATE



UNLISTED DATE



LOW "e" IN FEB.



TYPE-I-



INVERTED OVERPRINT



TYPE-II-

A.M.&A. Co. - ADAM MELDREN & ANDERSON Co.

BUFFALO, N.Y.



ONLY KNOWN EXAMPLE

J. N. ADAMS Co.

BUFFALO, N.Y.



ONLY KNOWN EXAMPLE

J. C. A. Co. ~ J. C. AYER Co.*

LOWELL, MASS.



UNLISTED DATE - VIOLET OVERPRINT



~ A.M.P. Co. ~ ABBOTT'S MENTHOL PLASTER Co. ~ WORCESTER, MASS.



UNLISTED TYPE & UNLISTED DATE - 1898
 FULL PUNCTUATION PLUS SMALL "O" OF CO., WITH FONT "B"
 EXTREMELY SCARCE ITEM FROM AN EXTREMELY SCARCE CO.



FONT "A" - "M" HAS FULL LENGTH CENTER STROKES,
 AND "P" HAS A NORMAL LOOP,
 "A" - "A"



FONT "B" - "M" HAS SHORT CENTER STROKES,
 AND "P" HAS A VERY NARROW LOOP,
 "B" - "B"



UNLISTED YEAR
 ~ ALL FONT'S "B" & "A" ~

~ A.H.R. ~ AMERICAN HOME REMEDY ~ CITY UNKNOWN



~ A & Co. ~ ASHBROOK & Co. ~ CHICAGO, ILL.



~ A.M.Co. ~ ALLCOCK MANUFACTURING Co. ~ NEW YORK, N.Y.



PROVISIONAL HAND-STAMP



NOTE: THE LAST "O" OF 1900 WAS PLANNED TO MAKE "1901"

~ A.M.D.C. ~ ALTENHEIM MEDICAL DISPENSARY ~ CINCINNATI, O.



UNLISTED COMPANY - USED ON FULL WRAPPER

TYPE-I-

AMDC

LIGHT CANCEL



RECENTLY DISCOVERED TYPE-II-

~ THE A.A.Co. - THE ABBOTT ALKALOIDAL Co. ~ CHICAGO ILL.
 TYPE I (UNLISTED DATES) PRINTED - UNLISTED TYPE - HAND STAMPED



~ A.B. - ALFRED BARTH ~ NEW YORK, N.Y.

ONLY KNOWN DATE



TYPE II

~ (AB) UNDER OUR NATIVE HERBS ~ ALONZO O. BLISS ~ WASHINGTON, D.C.



~ A.O.B.CO. - ALONZO O. BLISS Co. ~



TYPE I

~ A.C.M.& CO. - A.C. MEYER & Co. ~ BALTIMORE, MD.



UNUSUAL - ROULETTE & HYPHEN HOLE
 SAME DATE

VIOLET

A.C.CO. ~ ANGIER CHEMICAL COMPANY

BOSTON, MASS.



TYPE I



TYPE IA



TYPE II



MODIFIED TYPE IA
UNLISTED DENOMINATION
~ "DOUBLE OVERPRINT"



UNLISTED DENOMINATION - USED ON PIECE

AMERICAN FERMENT COMPANY

JERSEY CITY, N.J.



RED



BLUE-BLACK



BLACK

AMERICAN MEDICINE COMPANY

N.Y., N.Y.



SHARP IMPRESSION



WEAK IMPRESSION

ONLY DATES KNOWN



ABBA - ANHEUSER BUSCH BREWING ASSOC. - MANY CITIES



TYPE I



TYPE II



TYPE III

C.H. ARNOLD & Co.

N.Y., N.Y.



ONLY DATE KNOWN

A.R.CO. - ALEXANDER REMEDY CO.

NEW YORK, N.Y.



ONLY RECORDED VALUE

A.S.D.CO. - AMERICAN SANITATION DRUG CO. - CITY UNKNOWN



A.S.H.~A.S.HINDS*

PORTLAND, ME.



PROVISIONALS



TYPE-I-



TYPE-II-

UNLISTED DENOMINATION

A.K. REX

CHICAGO, ILL.



ONLY TYPE & DENOMINATION KNOWN

A.L.C. DENTINE

PROVIDENCE, R.I.



VIOLET-BLACK

GUM MANUFACTURER ??

VIOLET

~ A.T.G.H. ALFRED T.G. HODNETT ~

YORK, PA.

ONLY KNOWN DATE July 19, 1898
PRINTED



NO PERIOD AFTER "H"



NO PERIOD AFTER "T"

UNLISTED TYPE "A" HANDSTAMP
1898



UNLISTED TYPE "B" HANDSTAMP
1899-1900



FEB. 10, 1899



APR. 9, 1899



NOV. 21, 1899
BLUE



JAN. 15, 1900

YEAR & DATE - HANDSTAMP



SEPT. 8, 1898
FIRST "B" INVERTED



JAN. 11, 1899

B & CO. - BATTLE & CO.



TYPE - I -



TYPE - II -



TYPE - III -



TYPE - IV -

B. D. B. Co. - B. D. BALDWIN Co. CHICAGO, ILL.



TYPEWRITTEN



B. H. B. - B. H. BACON ROCHESTER, N.Y.



UNLISTED DATE



UNLISTED DATE



UNLISTED DATE



UNLISTED DATE



INVERTED OVERPRINT



UNLISTED - RED BROWN CANC.

Bov: Co. - BOVOX Co. SALEM, MASS.



TYPE - I -



TYPE - I - DOUBLE DOT



TYPE - II -

A. BANTZHOLDER
WINE WHOLESALER

N.Y., N.Y.



— BIG 4 ~ PHILATELIC ADVERTISING BUREAU — FEDERALSBURG, MD.



TYPE-I-



TYPE-II-

DR. W.S. BURKHART
— PRINTED SCRIPT OVERPRINT —

CINCINNATI, O.



PROVISIONAL



TYPE-I-



TYPE-II-



TYPE III "RED" INVERTED



TYPE-II-

~ B.J.J.S.C. ~ B.J. JOHNSON SOAP Co. ~ MILWAUKEE, WIS.



UNLISTED INVERTED

~ W.H. BULL & Co. ~

ST. LOUIS, MO.



TYPE-I-



BROKEN
"O"
DATE
LOOKS LIKE
1930

TYPE-II-



UNLISTED TYPE-III-

~ A.M. BININGER & Co. ~

NEW YORK, N.Y.



ONLY RECORDED VALUE

C.B.CO. ~ THE CALABASH BITTERS CO. ~ OGDENSBURG, N.Y.



UNLISTED DATE



UNLISTED DENOMINATION



UNLISTED DATE & COLOR
SHAVED 'O' TO MAKE A '1'

C.M.CO. ~ CARTER MEDICINE CO. *

N.Y., N.Y.

USED ONLY 3/8 CENT STAMP



UNLISTED DATE



UNLISTED DATE



THE CENTAUR CO. ~ THE CENTAUR COMPANY *

N.Y., N.Y.



UNLISTED PROVISIONAL



INVERTED DATE

C. I. H. Co. ~ C. I. HOOD & Co.*

Lowell, Mass.



TYPE-I-

UNLISTED DATE



UNLISTED DATE

BLUE OVERPRINT

TYPE-II-

CWJHH



UNLISTED PRINTED EXAMPLE

C.M.Co. ~ CHEESEBOROUGH MFG. Co.

N.Y., N.Y.



TYPE-I



TYPE-I



TYPE-I



TYPE-II

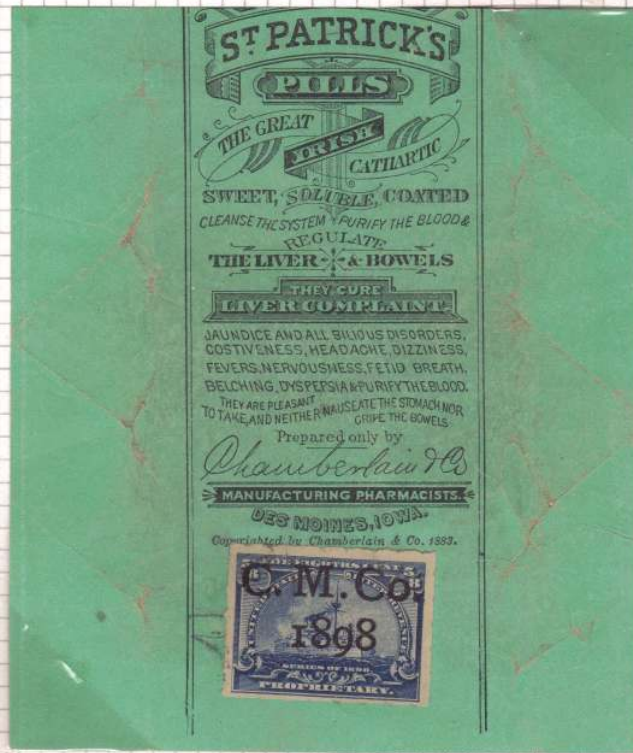


TYPE-III

C.F.M. ~ CHARLES F. MOYER

STRATINGTON, PA.





WRAPPER OF ST. PATRICK'S PILLS - PREPARED BY -CHAMBERLAIN MEDICINE CO.

TYPE-I.



TYPE-II.



- INVERT. SCARCE

C.M. ~ C. MARCHAND

N.Y., N.Y.



C.D. CO.

CITY - UNKNOWN



UNLISTED DATE

C.N.C. CO. ~ CHARLES N. CRITTENTON CO.

N.Y., N.Y.



TYPE - I -



TYPE - II -



ON PIECE
TYPE - II -



C.C.Co. ~ COCA COLA Co.

MANY CITIES



CHICAGO, ILL.



DALLAS, TX.



LOS ANGELES, CALIF.



ST. LOUIS, MO.

C.C.M. ~ DR. C. C. MOORE Co.

St. Louis, Mo.



UNLISTED DENOMINATION



TYPE II



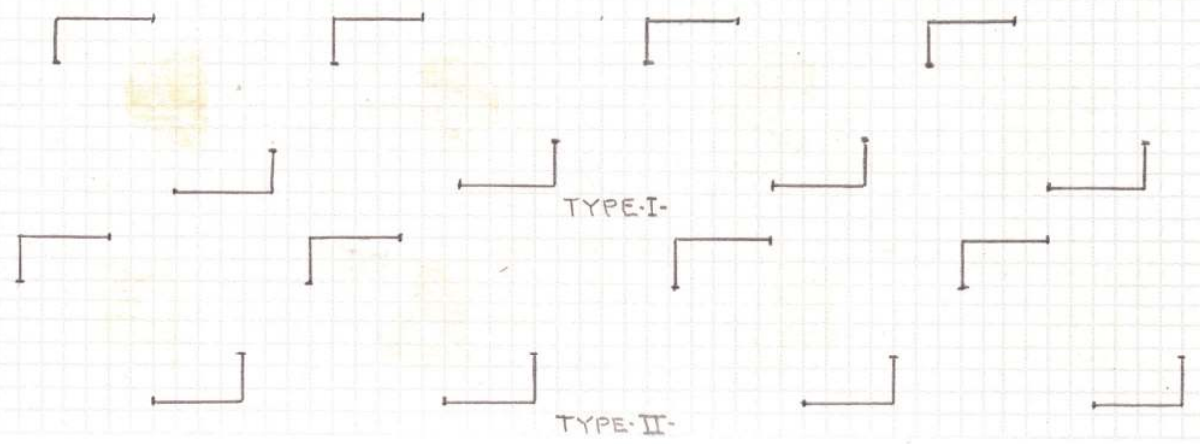
C.E.C. ~ CHARLES E. CORNELL

N.Y., N.Y.



UNLISTED DENOMINATION

C.M.Co. ~ CHAMBERLAIN MEDICINE Co.* ~ DES MOINES, IOWA.



C.M. & CO. ~ CASWELL, MASSEY & CO.

NEW YORK, N.Y.



TYPE-I-



TYPE-II-

THE CHATTANOOGA MEDICINE CO.*

CHATTANOOGA, TENN.



ONLY KNOWN DATE INV.



FIRST 'A' SHORT - BLACK



BLUE OVERPRINT



BLACK OVERPRINT



BLUE OVERPRINT

C.W. & Co. ~ DR. C. WAKEFIELD & Co.

BLOOMINGTON, ILL.



TYPE-I-



TYPE-II*
FONT 'B' NUMERAL '9'



TYPE-II
FONT 'B' NUMERAL '5'



NO PERIOD AFTER DEC.
UNLISTED



TYPE-II-



FONT 'B' BOTH NUMERAL '9'S

* VARIATIONS IN LETTER OR NUMERAL "FONT" FROM TYPE-I WILL BE DESIGNATED "FONT 'B'"

C.W. & Co. ~ DR. C. WAKEFIELD & Co. ~ CONTINUED ~ BLOOMINGTON, ILL.



NORMAL TYPE II



APOSTROPHE AFTER YEAR



NO PERIOD AFTER SEPT.



NO PERIOD AFTER SEPT.
FONT "B" BOTH NUMERAL "9"s



NORMAL TYPE II



NORMAL TYPE II



PERIOD AFTER FEB, LOW



TINY FONT - APOSTROPHE -



NORMAL TYPE II

— BLACK OVERPRINT —



NORMAL TYPE II



UNLISTED DATE
- UNCOMMON -



NO COMMA AFTER DAY



PERIOD AFTER DAY INSTEAD
OF COMMA



NO PERIOD AFTER YEAR

D. & Co. ~ DONIPHAN & Co.

ST. JOSEPH, Mo.



ONLY DENOMINATION KNOWN

D. C. MFG. CO. ~ DENVER CHEMICAL MFG. CO.

N.Y., N.Y.



ONLY RECORDED VALUE

D. C. MFG. CO. * DENVER CHEMICAL MFG. CO.

DENVER, Co.

* BRANCH OR DIFFERENT COMPANY ??



POSSIBLE PROVISIONAL



D.P.CO. ~ DEANE PLASTER CO.

YONKERS, N.Y.



BLACK



BLUE
TYPE I



UNLISTED COLOR BLUE



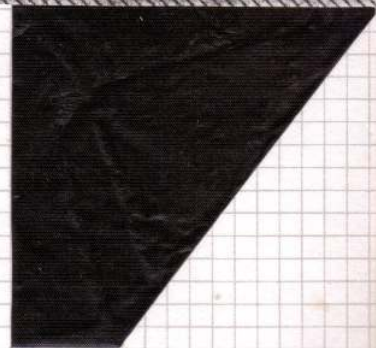
TYPE III



UNLISTED TYPE II



TYPE III
UNLISTED DENOMINATION



PORTION OF REMAINING
"PLASTER"



UNLISTED TYPE CANCEL

DR. D. J. & S. ~ DR. D. JAYNE & SON*
TYPE-I-

PHILADELPHIA, PA.



TYPE-II



NOTE: THAT THE RIGHT OVERPRINTS ARE ON A DIFFERENT PLANE THAN THOSE ON THE LEFT SIDE OF CENTER LINE - ? INDICATING ONLY A PORTION OF THE PANE WAS OVERPRINTED WITH THE SAME TYPESET.

TYPE-III-



NO PERIOD AFTER "D"

UNLISTED-DOUBLECANCEL

NO COMMA AFTER DAY

RED CANCEL

NO PERIOD AFTER "D"

NO COMMA AFTER "MO" & DAY

SMALL "9" AFTER "I" IN 1900

RED CANCEL

DR. D. JAYNE & SON - CONTINUED

TYPE-III-



SMALL "9" IN DATE



BROWN-VIOLET SHADE



LARGE "9" IN DATE



RED OVERPRINT



SLIGHT DOUBLE OVERPRINT



DOUBLE OVERPRINT

TYPE-V-



PERIOD INSTEAD OF COMMA AFTER "40"



TYPE-VII-



DOUBLE OVERPRINT



DR. D. JAYNE & SON~CONTINUED

TYPE-VII



TYPE-III

TYPE-III



TYPE-V

E. D. Co. ~ EMERSON DRUG CO.*

BALTIMORE, MD.



UNLISTED PROVISIONAL

TYPE-I- (HAND STAMPED)



READING DOWN



READING UP



GREEN HAND STAMP



GREEN HAND STAMP



TYPE-III- (HAND STAMPED)



NORMAL



INVERTED



UNLISTED DATE

TYPE-IV-



FIRST PRINTED TYPE

E. D. CO. ~ EMERSON DRUG CO. ~ CONTINUED ~

TYPE ~ V ~



UNLISTED DATE



UNLISTED COLOR



TYPE ~ VI ~

YEAR - DATES



1899



1900



1901



UNLISTED "BLUE" OVERPRINT

UNLISTED "BLUE" OVERPRINT

UNLISTED DATE



UNLISTED "BROWN" OVERPRINT

"DARK BLUE" OVERPRINT

UNLISTED DATE

NO "PERIOD" AFTER "CO"

E. D. Co. - EMERSON DRUG Co. - CONTINUED ~

NOTE:

THE EMERSON DRUG Co. WAS RATHER LATE IN HAVING "PRIVATE DIE STAMPS" PRINTED; 1901; BUT THEY STUMBLED BADLY BY ORDERING INSUFFICIENT QUANTITIES; AND HAVING TO REVERT TO THE "BATTLE SHIPS"

THIS LED TO THE TYPE VII PRECANCELS

FOLLOWING IS A COMPLETE SET - SCARCE IN BLOCKS OF FOUR -



E. D. Co. ~ EMERSON DRUG CO. ~ CONTINUED ~

NOTE:

THE EMERSON DRUG CO. WAS RATHER LATE IN HAVING "PRIVATE DIE STAMPS" PRINTED; 1901; BUT THEY STUMBLED BADLY BY ORDERING INSUFFICIENT QUANTITIES; AND HAVING TO REVERT TO THE "BATTLESHIPS" THIS LED TO THE TYPE VII OVERPRINTS.

THE FOLLOWING IS A COMPLETE SET; AND RATHER DIFFICULT TO OBTAIN.



E. J.

CITY UNKNOWN



E. A. O. ~ E. A. OSBORN

CHICAGO, ILL.



PROVISIONAL



TYPE I.



TYPE II.

E.F. & Co. ~ E. FOUGERA & Co.*

N.Y., N.Y.

TYPE-I-



UNLISTED DENOMINATION



SHORT CROSS BAR ON "F" UNLISTED

TYPE-II-



BROWN-VIOLET SHADE



TYPE-III-



BLUE OVERPRINT

E. FOUGERA & CO. CONTINUED ~



↑
"F" FONT

←
"F" FONT

TYPE III - UNLISTED
DENOMINATIONS - 1/8 & 1/4¢
UNLISTED 3/8¢ INVERTED
OVERPRINT.

TYPE "F" FONT - SHORT
CENTER STROKE WITH LARGER
CROSSBAR.



E.F.&Co.~E.FOUGERA&Co.~CONTINUED

TYPE-III-



'BLUE' OVERPRINT

NOTE: ALL OVERPRINTS PRINTED

E.L.&Co.~ELI LILLY & Co.

INDIANAPOLIS, IND.



HAND STAMPED OVERPRINTS

'RED' OVERPRINT

E.N.L.&Co.~E.N.LIGHTNER & Co.

DETROIT, MICH.



INVERTED OVERPRINT

UNLISTED 'RED' OVERPRINT

E.F.M.~EBBEY F. MATTIS

AMBLER, PA.



'FANCY' PURPLE HANDSTAMP



'FANCY' RED HANDSTAMP

F.C. & CO. ~ FRENCH, CAVE & COMPANY

PHILADELPHIA, Pa.



PROVISIONAL



MANY OF THE STAMPS FROM THIS COMPANY WERE SEPARATED BY SCISSORS

F.M.CO.

NEW YORK, N.Y.



FULVOLA CHEMICAL CO.

N.Y., N.Y.



ONLY KNOWN DENOMINATION

F.E. & JAG - F.E. & J.A. GREENE

BOSTON, MASS.

TYPEWRITTEN OVERPRINT



TYPE-I-



TYPE-II-



TYPE-III-

FRANCO AMERICAN HYGENIC COMPANY

CITY UNKNOWN



HANDSTAMP

F.R.A. & CO. ~ F.R. ARNOLD & CO.

N.Y., N.Y.

TYPEWRITTEN OVERPRINT



UNLISTED



UNLISTED



G.C.G & Co. ~ GEORGE C. GOODWIN & Co.

BOSTON, MASS.



DR.G.N.Co. ~ DR.GREENE NERVURA Co.

BOSTON, MASS.

TYPEWRITTEN OVERPRINT



INVERTED OVERPRINT



G.G.G. ~ G.G.GREEN

WOODBURY, N.J.

TYPE-I-



UNLISTED DENOMINATION



UNLISTED - DOUBLE OVERPRINT



G.C.Co. ~ GIANT CHEMICAL CO. PHILADELPHIA, PA.



UNLISTED DATE
UNLISTED DATE & COLOR
UNLISTED DATE & COLOR
ONLY KNOWN DENOMINATION USED 1

G & CO. ST LOUIS, MO.



ONLY KNOWN DENOMINATION

G.H.M.&Co. (FRANCE) ~ G.H. MUMM & Co. - WINERY -



TYPE-I-



TYPE-III-

GFH Co. ~ THE G.F. HARVEY CO. SARATOGA SPRINGS, N.Y.



ONLY KNOWN DATE & DENOMINATION

H.D.Co. - HOWARD DRUG Co.

WHITE RIVER JUNC, VT.



INVERTED OVERPRINT

"DOUBLE" INVERTED OVERPRINT



INVERTED OVERPRINT



ROULETTED



HYPHEN HOLE



INVERTED OVERPRINT



"HORIZONTAL PAIR" - LEFT STAMP - NO CANCEL



DOUBLE OVERPRINT



RARE

TRIPLE OVERPRINT

H.D.Co.~HOWARD DRUG Co. CONTINUED



INVERTED OVERPRINT



INVERTED OVERPRINT



"DOUBLE"-INVERTED OVERPRINT

H.K.&Co.~H.KLEIN&CO.

NEW YORK, N.Y.



PROVISIONAL -



UNLISTED DENOMINATION



H.B. & W. - HANCE BROTHERS & WHITE* PHILADELPHIA, PA.



PROVISIONAL H.S.



PROVISIONAL H.S.

TYPE-I-



UNLISTED DENOMINATION

TYPE-II-



TYPE-III-



TYPE-IV-



SHADES



PINK-ORANGE OVERPRINT - UNLISTED -



H.B. - HOWARD BROTHERS BUFFALO, N.Y.



UNLISTED - DATE



UNLISTED DATE



H.K.W. & Co. ~ H.K. WAMPOLE & Co. PHILA., N.Y., CHICAGO



TYPE-I-



TYPE-II-



TYPE-III-



TYPE-IV-



TYPE-V-

H.H.M. Co. ~ HUMPHREY'S HOMEOPATHIC MEDICINE CO.* ~ NEW YORK, N.Y.



RED



H. & R. - HALL & RUCKEL*

NEW YORK, N.Y.

TYPE-I-



UNLISTED DENOMINATION

TYPE-II-



HOUSTON DRUG CO.

HOUSTON, TX.



UNLISTED TYPE



HUYLER'S CO. - DR. E. P. HUYLER'S - (MOTHERS NOBLE'S REMEDIES)

CITY UNKNOWN



DOUBLE OVERPRINT



HAMLINS ~ W.O. Co. ~ HAMLINS WIZARD OIL Co.

CHICAGO, ILL.



BROWNISH-RED OVERPRINT



ONLY EXAMPLE OF 'RED' OVERPRINT KNOWN TO AUTHOR



H & G. Co.

DETROIT, MICH.



H.A.J. & Co. ~ H.A. JENKS & CO.

BIRMINGHAM, MICH.



I. S. C. IMPERIAL SOAP CO.

BOSTON, MASS.



UNLISTED: VIOLET - TWO LINE HANDSTAMP: POSSIBLY A PROVISIONAL -

~ TYPE I: PRINTED CANCEL ~



"ALL 7-5-98"

UNLISTED DENOMINATION
"RED INK"



VIOLET INK



RED INK



DEEP RED INK



UNLISTED DENOMINATION
"RED INK"

~ TYPE II: 2 LARGE ROSETTES ~



BLACK ROULETTED



BLACK HYPHEN HOLE



BLACK HYPHEN HOLE

SHADES



UNLISTED "BLUE" INK



UNLISTED DENOMINATION



"BLACK"



"RED"

I.S.G. IMPERIAL SOAP CO. - CONTINUED

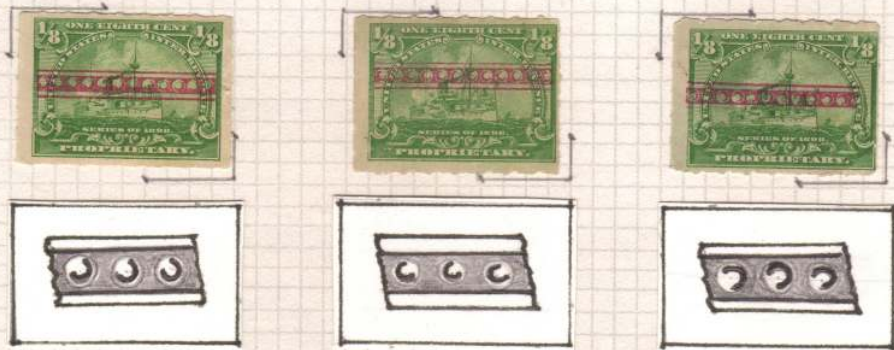
UNLISTED TYPES



SUSPENSION BRIDGE APPEARANCE



TYPE-I
TYPE-II
SMALL ROSETTES IN CIRCLES



OPEN AT UPPER LEFT OPEN AT UPPER RIGHT OPENED AT LOWER LEFT

ROW OF ENCLOSED CRESENTS

THESE ARE THE ONLY EXAMPLES I HAVE EVER SEEN (RARE)

I.C.P. Co. ~ INN CITY PHARMACAL Co. ~ ALLEGHENY, PA.



UNLISTED INVERTED



MISSING '1' IN RED OVERPRINT



UNCOMMON DENOMINATION

INTERNATIONAL FOOD Co. ~ INTERNATIONAL STOCK FOOD Co. ~ MINNEAPOLIS, MINN.



SCARCE DENOMINATION
UNLISTED TYPE I.



TYPE II-



TYPE II-



TYPE I-



TYPE II-



"HAND-STAMPED"
JOHNSON & JOHNSON

NEW BRUNSWICK, N.J.

UNLISTED

~ TYPE 'A' JJ



~ TYPE 'B' J&J



~ TYPE 'C' JJ SANS-SERIF



~ TYPE 'D' - TIGHT DOUBLE CIRCLE



AUG. 19, 1898 'A'



AUG. 23, 1899 'B'



SEPT. 29, 1899 'B'



OCT. 8, 1899 'A'
"8" INV.



AUG. 29, 1900 'B'



NOV. 15, 1898 'B'



JULY 15, 1899 'B'



JAN. 22, 1900 'A'



MAR. 26, 1900 'A'



JUNE 27, 1900 'B'



SEPT. 1, 1898 'A'
DAY INVERTED



AUG. 19, 1899 'A'



MAR. 31, 1899 'B'



JUNE 2, 1900 'B'

NOTE: THE "DAY" COMES IN TWO SIZES: 'A' ARE SMALL & PLAIN BLOCK FIGURES; 'B' ARE LARGER AND FANCIER -

J. H. S. & SON ~ DR. J. H. SCHENCK & SON

PHILADELPHIA, PA.



EARLIEST KNOWN DATE
TYPE-I-



TYPE-I-



TYPE-I-



TYPE-IV-

J. E. L. Co. ~ J. ELLWOOD LEE CO.*

CONSHOHOCKEN, PA.



TYPE-I-



TYPE-VI-

J.E.L. CO. - J. ELLWOOD LEE CO. - CONTINUED -

TYPE - VII -



TYPE - VIII -



INVERTED OVERPRINT

"1901" - LATE USE OF ROULETTED STAMP



YEAR DATE SET.

STICKLER BEANS 1897

J.W. & BRO. ~ JOHN WYETH & BROTHER*

PHILADELPHIA, PA.



EARLIEST UNLISTED HANDSTAMP



TYPE - III -
EARLIEST DATE KNOWN -

TYPE - VIII - 'A'
MONTH & YEAR -



TYPE - VIII - 'B'
MONTH, DAY & YEAR -



TYPE - IX - INCORPORATION -



TYPE - VI - SCARCE

K. & M. Co. ~ KEASBY & MATTISON CO.* AMBLER, PA



21



UNLISTED DATE INVERTED



UNLISTED DATE



TYPE-I-



23



INVERT



INVERTED OVERPRINT



DEEP PURPLE SHADE



TYPE-II-



ONLY PROVISIONAL IVE SEEN FROM THIS COMPANY

K. & M. Co. ~ KEASBY & MATTISON CO., CONTINUED

UNCOMMON - DOUBLE OVERPRINTS



- UPRIGHT - AND - INVERTED -



JUNE 15, 1901 - ONLY DATE LISTED WITH RED OVERPRINT

DR. K. & CO. ~ DR. KILMER & CO.*

BINGHAMTON, N.Y.



TYPE-I



TYPE-II

NY DIDNT PRINT



TYPE-III

LINCOLN BRAND 1412

DR. AUGUST KOENIG

HAMBURG, GERMANY



Hamburger Pflaster,

....tuer....

Huebneraugen, Bunions, Frostbeulen, etc.
Medicinirt! Elastisch! Palliativ!

Gebrauchsanweisung. — Man bade die Füße in warmem
Salzwasser und lege, nachdem die Stelle gut trocken gerieben,
ein Pflaster auf. Es entfernt allen Schmerz und jegliche Ent-
zündung, und bewirkt innerhalb drei Tagen die vollständige
Auflösung des Hühnerauges.

Preis—50 Pfennig.

Dr. August Koenig, 60 Bleichen Graben,
Hamburg.

— Zu haben in allen Apotheken. —

IMPORTED FROM GERMANY -

SCRIPT INITIALS C.M. - COMPANY-UNKNOWN.

TRANSLATION:

POULTICE FROM HAMBURG

FOR -

CORNS, BUNIONS, CHILBLAIN ETC.

MEDICINAL, ELASTIC, PALLIATIVE

DIRECTIONS: ONE WASHES THE FEET IN WARM SALT WATER, DRY THE SPOT
AND APPLY THE POULTICE. IT REMOVES ALL PAIN AND INFECTION. IT BRINGS ABOUT
THE TOTAL DISINTEGRATION OF THE CORN WITHIN THREE DAYS.

PRICE 50 PFENNIG = TO 15¢

AVAILABLE IN ALL APOTHECARIES.

L.P.Co.~LAMBERT PHARMACAL Co.

ST LOUIS, Mo.



TYPE-I-



TYPE-III-
TYPE WRITTEN



TYPE-IV-



TYPE-V-



NOV. 29, 1899



NOV. 2, 1900



DEC. 4, 1899



JAN. 12, 1900



MAR. 5, 1900



MAY 9, 1900



AUG. 29, 1900



TYPE-XIII - OCT. 23, 1900



NOV. 21, 1900

LEWIS MEDICINE Co.

ST. LOUIS, Mo.



TYPE 4A



TYPE 4B



TYPE 4F



TYPE 4D

L & M CO. ~ LANGLEY & MICHAELSCO. CONTINUED



LUYTIES BROS.

N.Y., N.Y.



C. E. LANE & CO.

St. Louis, Mo.



ONLY KNOWN DENOMINATION

THE LARKIN SOAP CO.

BUFFALO, N.Y.



BLACK -



VIOLET



~ ONE TYPE "SINGLE LINE" CIRCULAR CANCELLATION ~

L. D. Co. - LAZELL DALLEY & Co.

N.Y., N.Y.



PURPLE HANDSTAMP



PRINTED OVERPRINT



BLUE HANDSTAMP

L. E. P. Med. Co. - LYDIA E. PINKHAM MEDICINE CO.

LYNN, MASS.



UNLISTED DATE



RED OVERPRINT



PROVISIONAL



L. G. & Co. - L. GERSTLE & Co.

CHATTANOOGA, TENN.



TYPE-I



TYPE-II



TYPE-III

I. W. LYON & SONS

N.Y., N.Y.



PRINTED CANCEL
TYPE-I-



TYPE-II-



TYPE-IIb

- ALL TYPE II'S HAND CANCELS -



TYPE-IIc



TYPE-IIe

LYMANS CROWN HEADACHE POWDER

CITY UNKNOWN



USED STRIP OF "4"

INTERESTING HANDSTAMP
INSTRUCTIONS

~ "PUT STAMP HERE" ~ USE ~

LYMANS CROWN HEADACHE
POWDERS

MALENA CO.

Jersey City, N.J.



ORANGE-BROWN



YELLOW-BROWN

SHADES

M. & Co.

N.Y., N.Y.



VIOLET



TYPE-I-



BLACK



PRINTED OVERPRINT
TYPE-II-



UNLISTED TYPE

THE M.C.CO. ~ THE MERTZ CAPSULE CO.

DETROIT, MICH.



TYPE-I-



TYPE-II-



TYPE-II-



TYPE-III-



TYPE-IV-

TYPE DIFFERENCES ARE IN NUMBER FONTS

MORLEY BROS.*

ST. LOUIS, MO.



RED

BLACK

TYPE-I

BLUE

BLACK



BLUE

TYPE-II

BLUE



BLACK

TYPE-III

BLACK

TYPE-IVA

TYPE-IVA



BLACK

TYPE-IVB

BLUE



BLACK

TYPE-IVC



BLACK

TYPE-IVD



BLUE

TYPE-IVD



BLUE

TYPE-IVE



BLACK

TYPE-IVE

LINCOLN BRAND 1912

McK. & R. ~ McKESSON & ROBBINS*

N.Y., N.Y.



SHADE



SHADE



McK. & R. - McKesson & Robbins CONTINUED



M. D. Co. - MORLEY DRUG CO.

CHICAGO, ILL.



BLUE H.S. TYPE-I-



VIOLET H.S. TYPE-II-



PRINTED TYPE-III-

M. H. H. R. Co. - MUNYON HOMOPATHIC HOME REMEDY Co.

N.Y., N.Y.



TYPEWRITTEN CANCELS



PHILADELPHIA BRANCH - UNLISTED VARIETY

JOB MOSES

NY., N.Y.



UNLISTED TYPE II - ABBB
TYPE II - CONTAINS FONT 'A' WIDE 'S', FONT 'B' NARROW 'S'



BbaA



BbaB



AqbB



AbaA



Aba



Bba

TYPE III

CONTAINS FONT 'a' WIDE 'S'; FONT 'b' NARROW 'S' ALSO -
FONT 'A' STRAIGHT SIDE 'M'; FONT 'B' SLANTING SIDE 'M'

M.M.F. ~ M.M. FENNER

FREDONIA, N.Y.



1899



1900



1901



"MULTIPLES UNCOMMON FROM THIS COMPANY"

M. M. Co. ~ DR. MILES MEDICAL CO.

ELKERT, IND.

~ MORE OVERPRINT TYPES THAN ANY OTHER CO. KNOWN ~ "14"



TYPE-III-



TYPE-V-



TYPE-VII-



TYPE-VIII-



TYPE-VIII - WITH DIFFERENT TYPE "9"



TYPE-XII-

M. M. Co. ~ DR. MILES MEDICAL CO. ~ CONTINUED

TYPE-V
FIRST LINE IS 18MM LONG



YEAR ONLY

YEAR AND DATE

UNLISTED DATE

NO PUNCTUATION - FIRST LINE



UNLISTED DATE

TYPE-VI
DATE 2 1/4 MM HIGH



UNLISTED DENOMINATION

TYPE-VIII
FIRST LINE IS 15MM LONG



1898 - NO PUNCTUATION -

TYPE-IX
9'S ARE LOW IN DATE



TYPE-XII



FONT B888 - 1' NO SERIF -
"8" & "9" NARROW
"PUNCTUATION"
1899

FONT AAAA - 1' WITH SERIF -
"8" & "9" WIDER
"NO PUNCTUATION"
1899

FONT GAAA - 1' NO SERIF -
"8" & "9" NARROW
"PUNCTUATION"
1899